

Styling parts that make your truck look great!

MOUNTING INSTRUCTION FOR EYELIDS

Eyelids Halogen for Scania NG (Art. no: 12-0226)



Contents:

Left and right eyelid.
1 roll of double sided adhesive.
tape (60 cm long).

Eyelids Xenon / LED for Scania NG (Art. no: 12-0227)

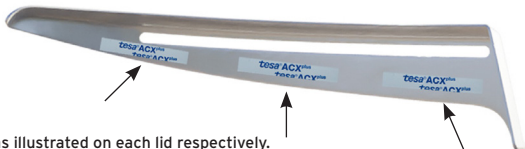


Contents:

Left and right eyelid.
1 roll of double sided adhesive.
tape (60 cm long).

How-to

- Make sure that the surfaces on the eyelids and your truck lights are clean and dry.
- Cut the adhesive tape into six equal parts, 10cm long.



- Apply as illustrated on each lid respectively.
- Remove the protective film on the adhesive tape.
- Put the eyelid in place and press firmly for 30 seconds.



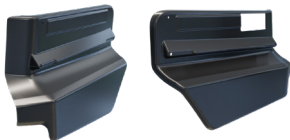
NOTE!

An ultimate bond is achieved after 72 hours. After 3 hours it has 75% of its strength.

Art. no: 611-2022-06-09

Styling parts that make your truck look great!

MOUNTING INSTRUCTION FOR DOOR EXTENSION FOR SCANIA NEXT GEN P-SERIES Art no: 20-0334



Contents:

Left and right extenders.
1 roll of double sided adhesive tape
(96 cm long).



1. Remove the two rubber seals on the lower inside of the cab door.
2. Make sure that the surfaces on the door extension and the lower inside of the cab door are clean and dry. Apply 12-15 cm long pieces of tape according to the pictures (4 on the drivers door and 3 on the passenger door).
3. Use the sight holes on the extension to find the correct position.
4. Align them with the outer upper corners of the holes left from the rubber seals that was removed in picture 1. Push the door extension against the door, angle outwards so that the tape does not touch the door.

This edge should be the only part making contact with the inside of the door at this point



5. Aim and slowly move it upwards until the lower tape make contact.

Angle the door extension so that the upper tape makes contact and press firmly for ~30 seconds. After 3 hours it has 75% of it strength, the ultimate bond is achieved after 72 hours.

Check that the door extension moves freely from the step on the drivers side when tilting the cab. When tilting the cab, the cab moves sideways. The distance between the door extension and the step will decrease. If the product is attached correctly you should have a clearance of approximately 5mm. If there's a problem. Redo the mounting procedure with new tape.



INSTRUCTION VIDEO

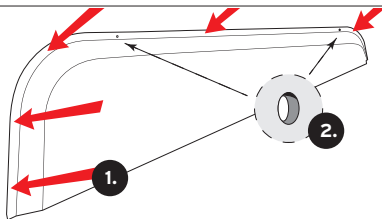
Watch instruction video: <http://youtu.be/janBJAaaaY8>

order@truckstylesweden.com
Phone: +46 (0) 70-007 9876



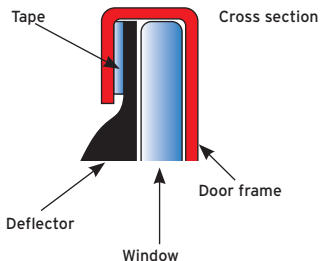
Styling parts that make your truck look great!

MOUNTING INSTRUCTION FOR DOOR WIND DEFLECTOR



Step 1.

Apply the tape on the outside of the deflector, see (pos 1.). Use the holes (pos 2.) to attach wire to handle the deflector when painting.



Step 2.

Pull down the windows and make sure the inside of the door frame is clean and dry.

Step 3.

Remove the safety strip on the tape and mount the deflector against the door frame.



Step 4.

Pull up the window to make pressure on the tape. Do not use the window, for the tape to harden (normally after 24 to 48 hours depending on temperature in the environment).

Art. no: 611 - 2022-06-09



INSTRUCTION VIDEO

Watch instruction video: http://youtu.be/Gtj_EgPO0GM

order@truckstylesweden.com
Phone: +46 (0) 70-007 9876