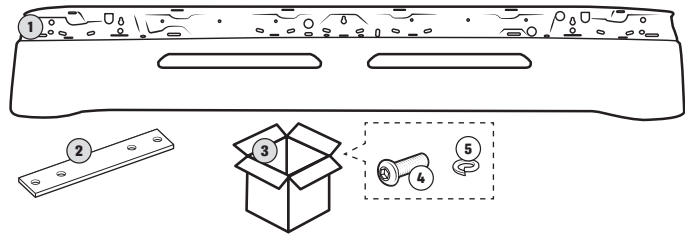


CONTENTS:

Pos	Name:	Art no:	Pcs
1	Sounvisor Scania NG /30 cm/35 cm/FLAT	10-0215 WL/WLP/CL 10-0217 WL/WLP/CL 10-0220 WL/WLP/CL	1
2	Mirror extender 140/170 mm	403/402	1
3	Installation kit mirror extender	90-0013	1
4	Hexagon screw M8x25 mm	451	2
5	Spring washer M8	474	2



Pos	Name:	Art no:	Pcs
1	Lazer Linear Elite 18 with or without position lights*	500/501	2
2	Y-cable Lazer with or without position lights*	520/521	1
3	Installation kit for Lazer	90-0012	1
4	Bracket Lazer for Scania	404	4
5	Special screw for bracket M8x25 mm	406	2
6	Hexagon screw M8x25	451	4
7	Washer 8,4x24x2 mm	471	8
8	Washer 6,4x18x1,6 mm	480	8
9	Locknut M8	461	4
10	Hexagon screw M6x20 mm	453	4
11	Spring washer M6	475	4
12	Rubber washer 8,5x30x3 mm	477	4
13	Nylon washer 6,4x18x1,6 mm	478	4

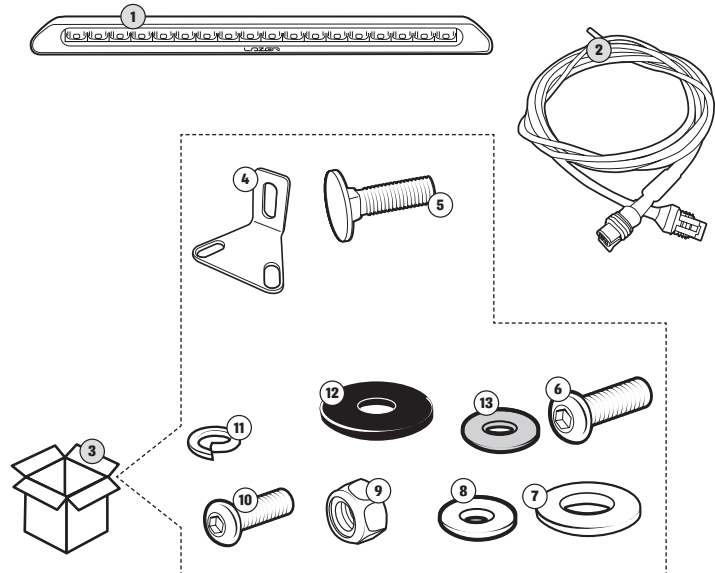
*LED-bars and Y-cable only included with article number 10-0215WL/WLP, 10-0217WL/WLP och 10-0220WL/WLP



IMPORTANT!

All installations should be done by experienced mechanics/vehicle electricians. In the event of your own modifications or making holes in the product, the warranty expires. Always follow the truck manufacturer's the truck manufacturer's bodywork instructions regarding drilling and wiring in the cab. The same applies to the dimensioning of cables and the connection of lighting.

TruckStyle Sweden AB does not take responsibility for any damage that occurs in the event of an incorrect installation. The installation instructions describe the installation of sunvisor on a left-hand drive vehicle.

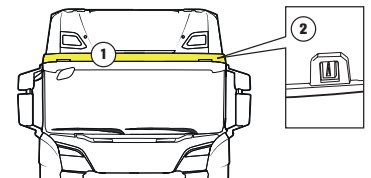


1. Start by removing the upper part (1) of the sunvisor by pushing in the upper part's lockings (2).



NOTE! Save the upper part to be reused for the new sunvisor.

1. Upper part
2. Locking

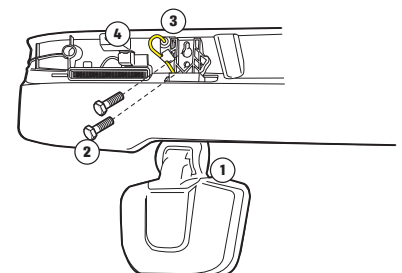


2. Disconnect the connector (3) between the cab and the front mirror (1) and remove the front mirror from the cab by removing 2 screws (2). Disconnect any contact piece for position lights between the cab and the sun visor. Remove position lights (4) with associated cabling from the sunvisor.



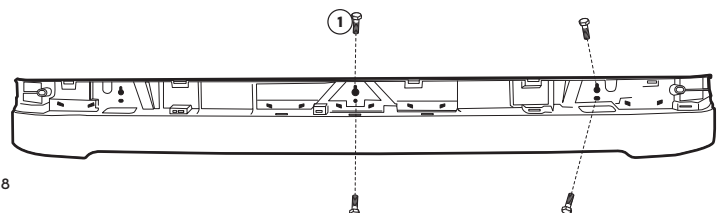
NOTE! If mounted, save position lights and associated wiring that will be reused for the new sunvisor.

1. Front mirror
2. Screw M8
3. Front mirror cable & connector
4. Positions light with connector

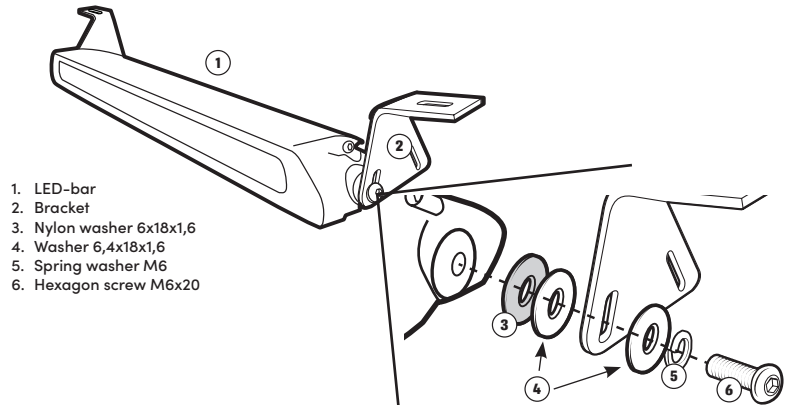


3. Remove the sunvisor from the cab by removing remaining 4 screws (1).

1. Screw M8



4. Place the bracket (2) on the respective LED-bar (1), with attached fasteners (3-6). Repeat and place the fasteners on the next LED-bar.

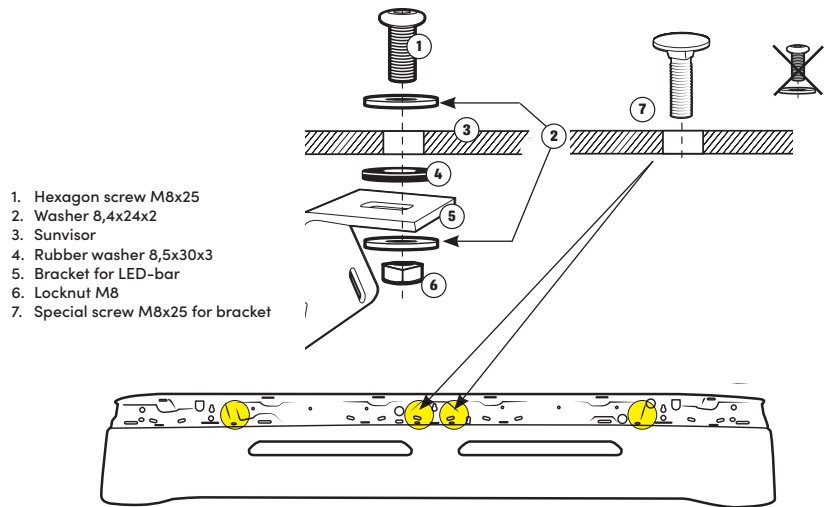


5. Place the LED-bars in the sunvisor with attachments fasteners (1-7) in intended holes (yellow markings). Repeat and fit the fasteners on the next one LED-bar.



NOTE! If the new sunvisor has 5 or more position lights, then the hexagon screw (1) and flat washer (2) must be replaced with the bracket with special screw for bracket (7).

Turn the head on the special screw bracket (7) according to the picture, so that the recess in the bracket points in the travel direction of the truck.

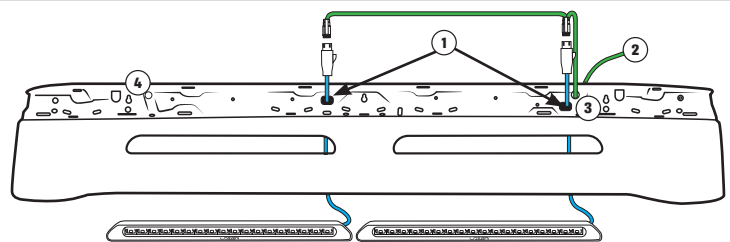


6. Run cables from the LED-bars with connectors through the holes (1) in the sun visor. Then pull the Y-cable (2) through the hole (3) and out onto the back of the sun visor. Connect the Y-cable's connector to the LED-bars connector.



NOTE! Depending on which side of the cab the electrical connection is to be made, the Y-cable (2) can also be turned and pulled through the hole (4) on the opposite side of the sunvisor.

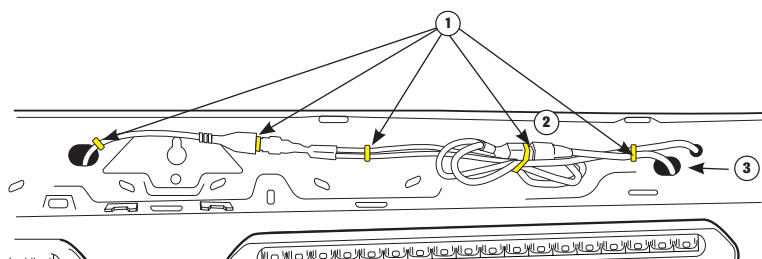
1. Hole for LED-bar cable
2. Y-cable
3. Hole for Y-cable
4. Alternate hole for Y-cable



7. Pull 5 cable ties (1) from the back of the sunvisor through the pre-drilled holes and insert the wiring on the front of the sunvisor. Install any cabling for the position lights, use the pre-drilled ones the holes for cable ties if more attachment points for the wiring is required.



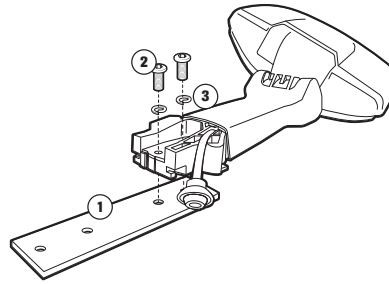
IMPORTANT! Attach the cable ties to the connectors as in the picture (2). So that the cables are centered in the holes (3).



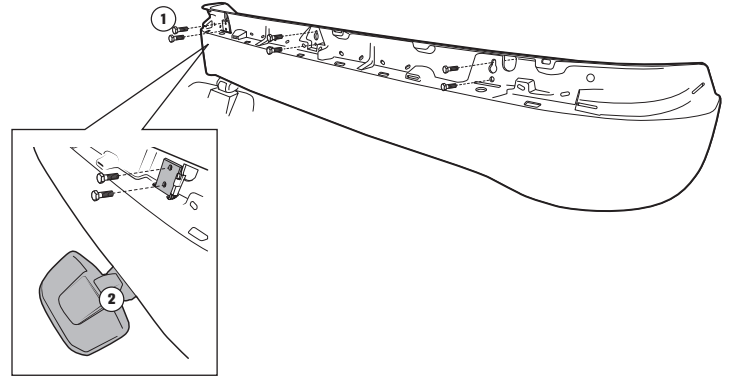
1. Cable tie
2. Connector from LED-bar with cable tie
3. Hole for cables

8. Place the mirror extender (1) on the front mirror with 2 screws (2) and spring washers (3)

1. Mirror extender
 2. Hexagon screw M8x25
 3. Spring washer M8



9. Put the sunvisor and the front mirror with the mirror extender with 6 press-in threaded screw (1). The screws must be adjusted in length so that the screws' thread engagement in the cab's weld nuts is the same as on the original sun visor.



1. Press-in threaded screw M8
 2. Front mirror with mirror extender



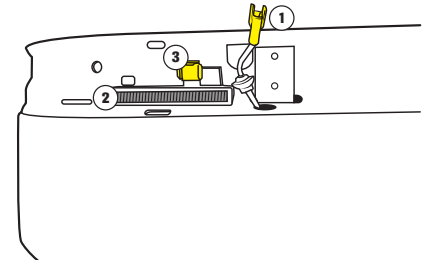
IMPORTANT! If other accessories (for example light boxes or light arcs) are to be mounted, but only use two of the sunvisor's attachment points, an equally thick spacer must be used in the positions not affected by the accessories. Be sure to make the distance 80x50 mm x thickness of the accessory. The reason is to distribute the power so that there is no tension in the sunvisor. No gaps are allowed!



IMPORTANT! Tighten the screws by starting with the 2 middle screws and finally tightening the 4 outer ones.

10. Connect the front mirror's connector (1) to the cab's cables. If the sunvisor is equipped with position lights, connect the wiring harness to the cab. Fit the position lights (2) and connect the wiring harness to the position light connector (3).

1. Front mirror connector
 2. Position light
 3. Position light connector



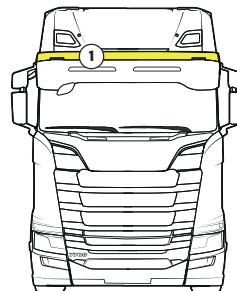
IMPORTANT! All cable entries in the cab must be sealed so that water cannot enter the cab.

11. When the electrical connection between the vehicle and the LED ramps is performed (performed by electrician). Turn on the LED ramps and adjust the light pattern, finally tighten all the screws, and nuts.

Check the function of the front mirror and same for the position lights if equipped.

12. Put back the original upper part on the new sunvisor (1).

1. Upper part





Door Wind Deflector Black Arrow
 Art. no: 16-0301
 For right hand drive. Art no: 16-0301RHD



Door Wind Deflector Black Axe
 Art. no: 16-0300
 For right hand drive. Art no: 16-0300RHD



Door Extension for P-cabin
 Art. no: 20-0334



Wedge Large with Vision X - VL with Work Light
 Art. no: 14-0281



Wedge Large cut for Scania position light
 Art. no: 14-0248
 Lamp not included



Wedge Large no cut
 Art. no: 14-0245



Wedge XL med Vision X - VL with Work Light
 Art. no: 14-0282



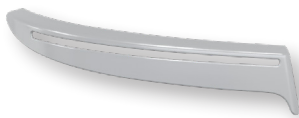
Wedge XL cut for Scania position light
 Art. no: 14-0249
 Lamp not included



Wedge XL no cut
 Art. no: 14-0246



Wedge XL cuts for 2 positions lights.
 Art. no: 14-0275
 Lamps not included



Eyelid Xenon/Led
 Art. no: 12-0227



Eyelid Classic
 Art. no: 12-0228



Eyelid Halogen
 Art. no: 12-0226



Tail Light Holder
 Art. no: 18-0336



Use mobile camera to get Swedish Instruction

